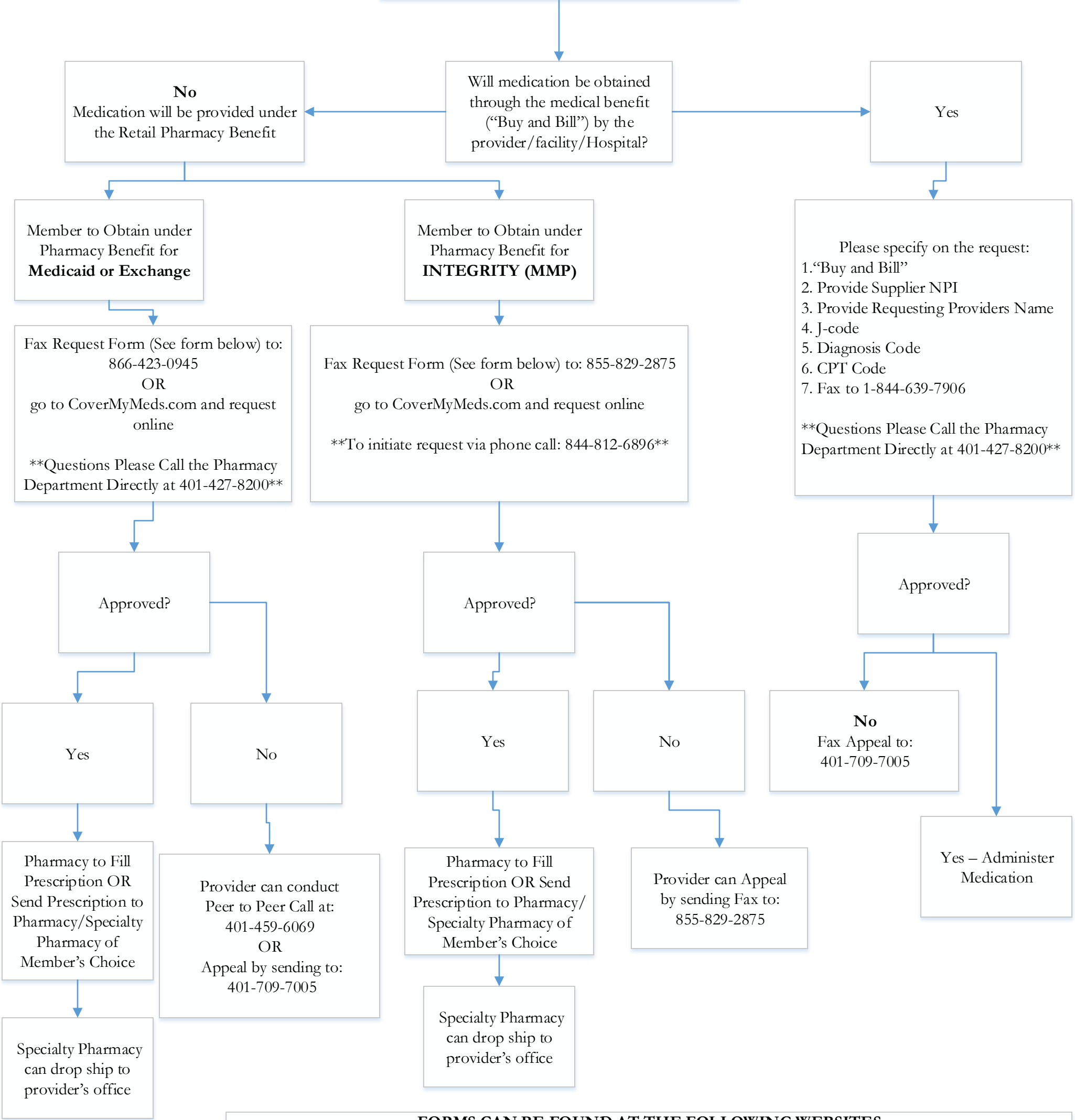




**How to Identify Neighborhood Health Plan of Rhode Island Members by specific Plan:**  
1. INTEGRITY (MMP) members can be identified by ID numbers that start with a “130”  
2. Exchange members can be identified by ID numbers that start with a “135”  
3. Medicaid members can be identified by a nine digit ID number

Prior Authorization Required for Neighborhood Health Plan of Rhode Island Members



**FORMS CAN BE FOUND AT THE FOLLOWING WEBSITES**

**Formularies found at:** <https://www.nhpri.org/Providers/2019PharmacyResources.aspx>

**Makena Form:** [https://www.nhpri.org/Portals/0/Uploads/Documents/MAKENA\\_HYRDOXYPROGESTERONE-PA\\_FORM.pdf](https://www.nhpri.org/Portals/0/Uploads/Documents/MAKENA_HYRDOXYPROGESTERONE-PA_FORM.pdf)

**Medicaid and Exchange Form:** <https://www.nhpri.org/Providers/2019PharmacyResources/PriorAuthorizationForms.aspx>

**Integrity (Medicare/Medicaid Plan):** <https://www.nhpri.org/Medicare-Medicaid.aspx> and then go to Pharmacy Benefits (2019 Pharmacy Benefits)